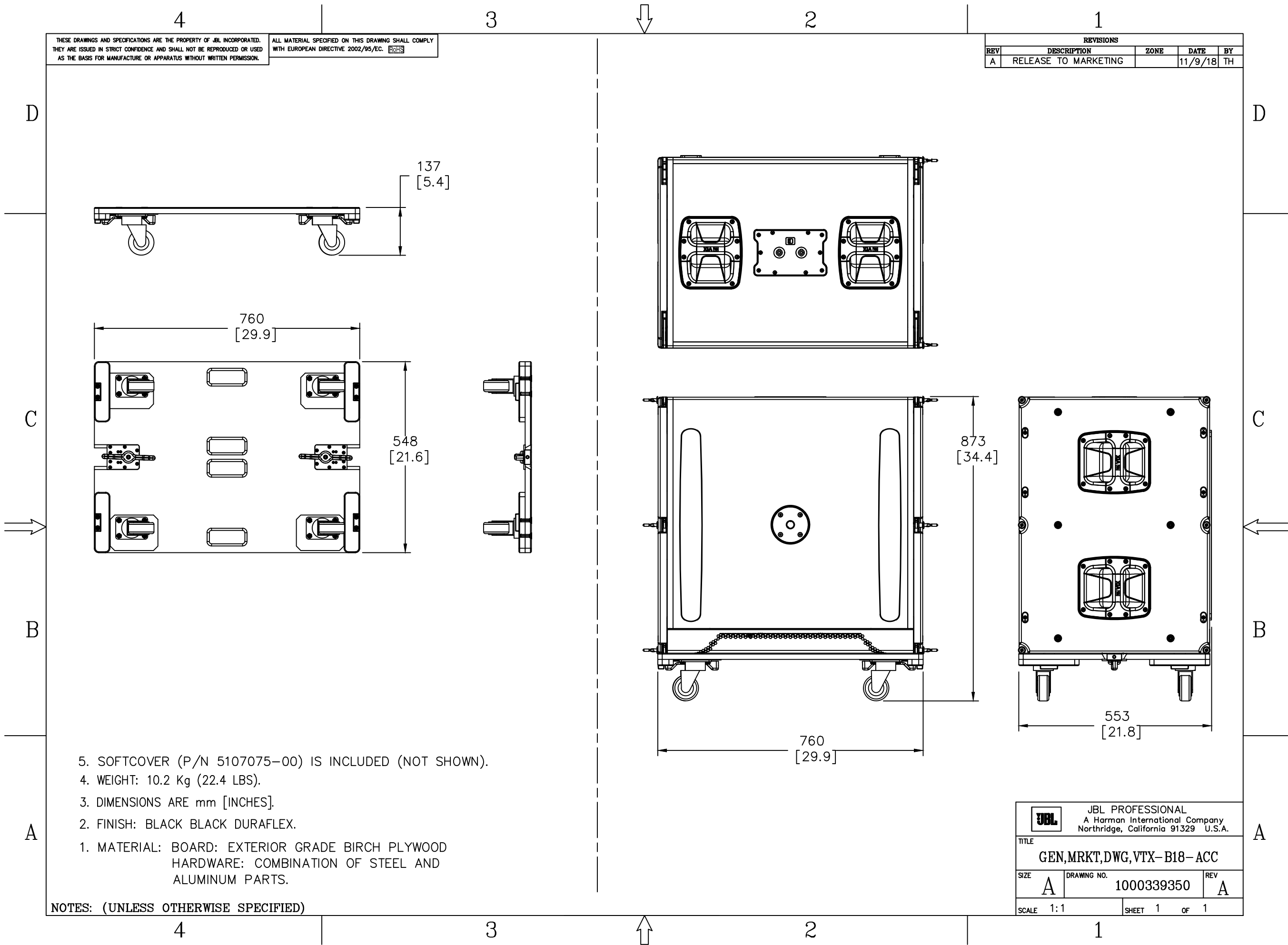


THESE DRAWINGS AND SPECIFICATIONS ARE THE PROPERTY OF JBL INCORPORATED. THEY ARE ISSUED IN STRICT CONFIDENCE AND SHALL NOT BE REPRODUCED OR USED AS THE BASIS FOR MANUFACTURE OR APPARATUS WITHOUT WRITTEN PERMISSION.

ALL MATERIAL SPECIFIED ON THIS DRAWING SHALL COMPLY WITH EUROPEAN DIRECTIVE 2002/95/EC. **RoHS**

REVISIONS				
REV	DESCRIPTION	ZONE	DATE	BY
A	RELEASE TO MARKETING		11/9/18	TH



JBL JBL PROFESSIONAL A Harman International Company Northridge, California 91329 U.S.A.		
TITLE GEN,MRKT,DWG,VTX-B18-ACC		
SIZE A	DRAWING NO. 1000339350	REV A
SCALE 1:1	SHEET 1 OF 1	